

HEMYOCK WALKS

USING PUBLIC RIGHTS OF WAY

HEMYOCK

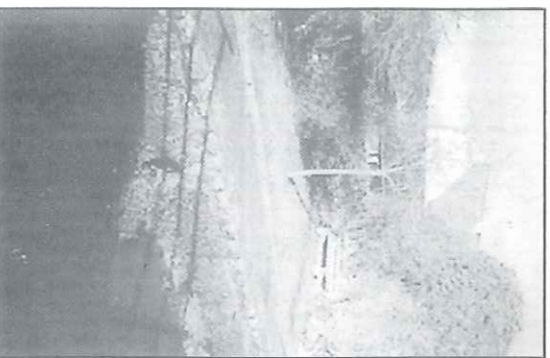
The parish of Hemyock is situated on the upper part of the River Culm in the lovely Blackdown Hills, near the border with Somerset. The hills are mainly composed of Clay with Flint, Upper Greensand and Keuper Marl deposits, a combination that has produced quite distinct scenery. The River Culm is fed by a number of smaller rivers and streams which run down through the parish from the hills.

Edward the Confessor held the Manor of Hemyock prior to the Norman Conquest when it passed to the "Conqueror", William 1st. In the Domesday Book, Hemyock was shown as Hamihoc a name of Celtic or Saxon origin, expert opinion being rather divided as to its true derivation. The tower of St. Mary's church dates back to Norman times, the body of the church being added to over the centuries.

Hemyock has its own castle dating back to the 14th century. Many of the original battlements can be seen to this day. There was undoubtedly an earlier substantial building on the site of the castle.

Within the boundaries of Hemyock parish are a number of small hamlets, some such as Culm Davy that were Domesday "Manors". There is a delightful Elizabethan chapel at Culm Davy.

In the centre of the village is the famous Hemyock "Pump". It was erected to commemorate "the Reign of Queen Victoria, the Coronation of Edward VII and Peace in South Africa 1902". Nearby is the welcoming village inn dating with certainty to the early 18th century.



Part of Footpath 34

Hemyock is very much a "working" village. Apart from its farming community there is the St Ivel factory at Millhayes the modern successor to the Culm Valley Dairy Co. founded by four local farmers in 1886. The Young Farmers movement has its origins in Hemyock starting life in 1920 as the "Calf Club Hemyock No. 1". There is an abundance of wildlife in the surrounding countryside. The walker will often encounter deer and other small mammals plus a wide range of bird life including the majestic buzzard frequently seen soaring above the hills and valleys of Hemyock



Hemyock Castle

A local history has been written about Hemyock and is available in most of the village shops and the inn.

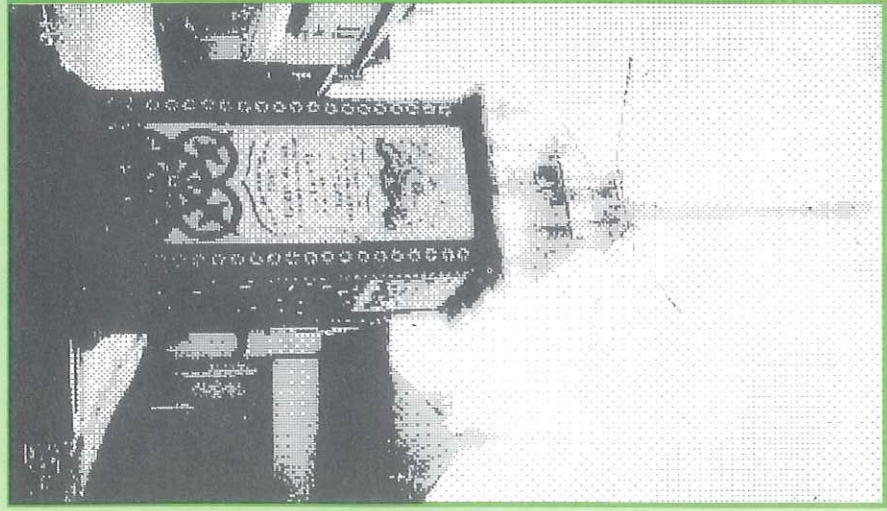


RESPONSIBILITIES OF THE PUBLIC

Remember that by using the paths properly and following the Country Code you are much less likely to come across problems.

- ❖ Enjoy the countryside and respect its life and work.
- ❖ Guard against all risk of fire.
- ❖ Fasten all gates.
- ❖ Keep your dogs under close control.
- ❖ Use gates and stiles to cross fences, hedges and walls.
- ❖ Leave livestock, crops and machinery alone.
- ❖ Take your litter home.
- ❖ Help to keep all water clean.
- ❖ Protect Wildlife, plants and trees.
- ❖ Take special care on country roads.
- ❖ Make no unnecessary noise.

There are two ways in particular by which you can help to promote harmony in the countryside. If you drive out before starting your walk do not park your car where it can obstruct access to fields. If you are in a party walk or ride in single file and do not trespass by spreading out beyond the confines of the path.



HEMMCOCK

Devon Parish Walks



WALK 1

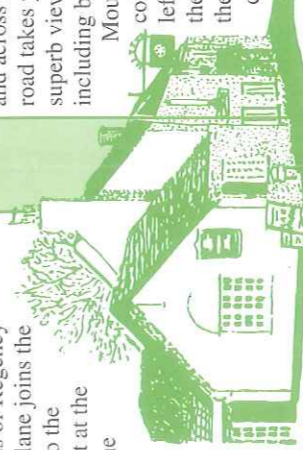
Starting from the Pump walk past the inn, The Catherine Wheel (which dates to the early 18th century) follow the Dunkswell Road past the butchers and up the hill for about 300 yards. On your right (opposite a bungalow) is a stile and signpost marking the beginning of Footpath 24. Follow the right edge of the field to another stile. Keep climbing, keeping to the left hand hedge to gates, through the gate at the top and into a lane. The upper part of this walk gives superb views of the valley. Turn left down the lane which leads past the grounds of Regency House on your left, (once the rectory) the lane joins the main road where you turn left and return to the village. An alternative route is to turn right at the small lane (after the gates) into a green lane (often muddy). This can be followed to a minor road going right down the hill and linked with Walk 2.

WALK 2

(Start Point OS ST 01/11 123140)
(Footpath 19). A delightful walk best commenced at Whitehall by the old forge. Take the stile by the larger thatched house. Cross the small field to a second stile. You are now crossing the site of the Old Culm Valley Railway (disused since 1975). Several bridges now take you across the Culm and minor streams. If extremely lucky you may see a dipper (even a Kingfisher). Having crossed the stream keep to the left of the next field ignoring a small private bridge on your left, until you reach a metal bridge. Over the bridge, through a gate keeping to the left, in a South Easterly direction cross a large field to the top and cross through another gate until you reach the main Culmstock Road. Hemmcock is to the left. Alternatively cross to the lane opposite, climb through the hamlet of Tedburrow. Pass Browning's Farm (on left) to a fork. The lane left leads back to Walk 1.

WALK 3

Start from the 'Pump', on your left is the 18th Century Catherine Wheel Inn (once the New Inn). Until a fire in 1928 there was a second inn (The Star) alongside. Cross into St. Mary's church with its sturdy Norman tower. The church was 'rebuilt' in 1847. Footpath 34 runs alongside the Church, after a few yards on the left is Hemmcock Castle (open Easter - September. Weekends, Bank Holidays and Tues & Thurs afternoons). The present castle dates to the 14th Century but has much earlier origins. Observe the granite doorway beyond the tower, either installed by John Graves Simcoe the first Lieutenant - Governor of Upper Canada or his son Henry Addington Simcoe. By the footpath is a seat overlooking the Church - A wonderful spot to relax.



The Catherine Wheel

WALK 4 AND 5

(can be linked together)

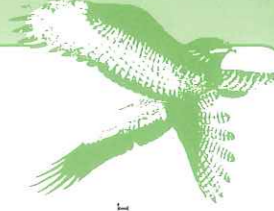
Walk 4 (Footpath 38 starts near Mountshayne Farm (south of the village following High Street, turning left 100 yards after 'Windward Edge'). Mountshayne Farm has been in the Clist Family for over 400 years. Follow a lane past barns to woods on right - through 2nd gate on your right up through woods to fields at top, keeping to the left fork the path enters another field. From here it runs along the ridge (following hedge-line) through gates and across stiles until it reaches a minor road on a steep hill. The road takes you back to Hemmcock by turning right. There are superb views on this walk and always plenty of wildlife including buzzards and Roe Deer. For Walk 5, also go past Mountshayne along the lane ignoring Footpath 38. Pass a cottage on your left and shortly after is a gate on your left with a signpost into a field (Footpath 39), you cross the field downhill (ignoring Cox's Park, a bungalow on the left). Through gates at bottom to a small bridge, cross the next field to gate on lane, turn left and follow lane for about a mile until you come to Holcombe Cottage on your left. Just past the cottage is a stile and a signpost indicating Footpath 32, the clearly marked path crosses the fields to Hartnell's Farm. Go through the farmyard onto the minor road which leads to Hemmcock (left) past the now disused Culmbridge Mill.

WALK 6

(Start point OS ST 01/11 147149)
(For the adventurous nature lover)

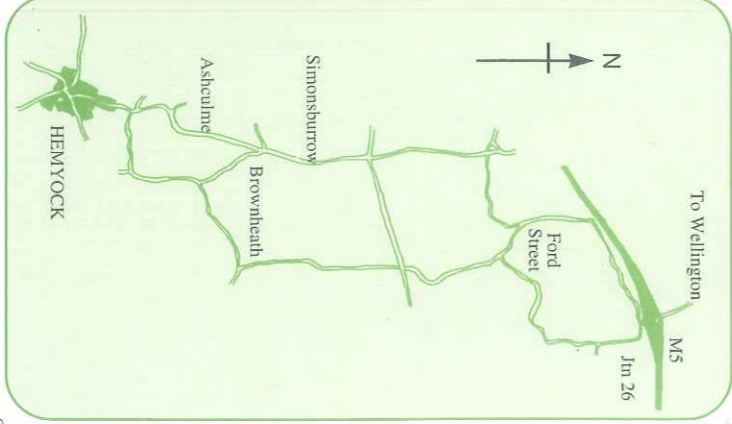
The best starting point for this walk is Middle Ashculm Farm. Footpath 10 is signposted through the farm and almost due north along the valley. The path turns right by a stile (sometimes very wet here) leads over a small bridge and across to the farm buildings. After going through the yard turn left onto the lane. You are now on (Bridleway No. 9). The route passes through the garden of 'Lane End' into Ashculm Turbary. This is very wet at all times and wellington boots are a must. The route is difficult to follow owing to the rapid growth of vegetation in this unspoilt wetland. Press on through almost due west until you reach a footbridge. Follow the path up through the turbary (a Site of Special Scientific Interest. Please keep to the path). At the upper end, the path is very muddy. You come out on a steep track by Flints Cottage. Climb the few yards to the main road at Simonsburrow turn left for Hemmcock or to return to Ashculm. This can be a very strenuous walk but is worth the effort for those who enjoy the wilder places!

Along the road towards Hemmcock (shortly after the left turn in Ashculm) is Footpath 8A which can be used to link up with Walk 7.



LOCATION MAP

The paths and tracks that we have today as public rights of way are the result of having been used by people for hundreds of years, for hunting, fishing, farming, trade, military venture and pilgrimage, and for pleasure and recreation.



These public rights of way, whether footpath, bridleway or byway are part of the Public Highway, and are subject to the same protection in law as a road. Remember, though, that the land you cross on a right of way is owned by an individual or organisation, and you will be sharing these rights of way with other users. The land you are crossing may well be farmed. FOLLOW THE COUNTRY CODE, whenever you are in the countryside.

For Local Public Transport Information use the Devon County Council DevonBus Enquiry Line: Exeter, Barnstaple, Plymouth or Torquay 382800
For further details relating to any public path matter please contact:

The Public Rights of Way Service,
County Environment Department,
Devon County Council,
County Hall, Exeter. EX2 4QW
Tel: Exeter, Barnstaple, Plymouth or Torquay 382550

COUNTRYSIDE COMMISSION

This publication is grant aided by

ENVIRONMENT

St. Mary's Church



WALK 9

(Start Point OS ST 01/10 151098)

Starting at lane below Higher Mackham Farm (near junction with Footpath 42b. Follow the lane (Footpath 42) to farm. Carry on past farm buildings and follow the waymarks to open country bearing left along the edge (past junction with Footpath 42a). The path continues through a 'lane' enclosed by a hedge then slips downhill to a wooded valley with stream. This can be a wet crossing at times. Through a small gate into the field hugging the left hand side until farm appears (Gorwell) cross to yard and carry on through passing the farm-house, to the lane (left) follow to minor road. (Left for Madford and Hemmcock).

WALK 8

(Footpath 35). Starts at a track just above Windward Edge (see Walk 4). Go a few yards down the track then left through a gate across the field into the next field - right down to the stile by the stream. (No bridge at present so the bank can be a scramble). Cross two more fields to Oxenpark Farm. Once through the yard, turn right up lane (permissive route) to main road and turn right for Hemmcock.

WALK 7

(Perhaps Walk 7 is the finest walk in Hemmcock)

This is on Footpath 9 which starts on the hill about 150 yards south west of Higher Culmpyne Farm. The route runs due north along the ridge. Birds and other wildlife are abundant and the views towards Dartmoor are stunning. The route is way marked and runs through fields and woodland keeping close to the right hedgeline on the ridge. The Wellington Monument acts as a beacon to the north as your progress. In one field is a huge stone. Legend has it that a 'pixie' buried a crock of gold here many years ago!! The path brings you out on a main road by Monument Farm. Turn right for Wellington Monument and Simonsburrow. Simonsburrow (Sigmond's Burgh) was once an ancient burial mound reputedly of a saxon warrior. From here follow the road to Footpath 8A which will lead you back to the starting point.

WALK 10

Point OS ST 01/11 12466)

Bridleway/Footpath - starts at Crossways Farm (200 yards west of Wrangway Cross). Only a short stretch is in Hemmcock Parish but it leads to Blackdown Common and Culmstock Beacon via a Culmstock Parish path (34). From the beacon one can scramble down the hillside to link up with Footpath 18 (Hemmcock) which leads down through two fields and a lane to Pithayne Farm. (Through the farm) and follow the track to the left until you reach a minor road left for Culm Davy, right for Hemmcock or Culmstock.

WALK 11

(Start Point OS ST 01/11 120126)

Owleycombe Common (Footpath 23). Starting on the minor road about 1/4 mile above Owleycombe Cottage. Just follow the marked path along the ridge through delightful woods, across a stile, field and 2nd stile onto the common itself. The path can be a little difficult when the bracken is flourishing. The far end of the Footpath 23 is to be redefined but it is easy to link up with the footpath down across the common into Culmstock.

There are 33 footpaths in the Parish of Hemmcock as shown on the map and the majority of these are walkable but the geographical nature of the area is such that many routes involve a certain amount of hill work. Some paths can be very muddy in wet weather. Sensible footwear is a must. The physical shape of the parish is such that many of the paths are some way from the village centre and to reach them requires walking along the lanes or driving to a suitable point and parking. If walking take great care, if driving and parking, please park with proper consideration for other road users, landowners etc. Do not block entrances, always lock your car. This booklet offers the walker a selection of 11 walks in and around Hemmcock some short some long. The adventurous individual can create a circular walk by linking some footpaths and lanes either within Hemmcock or combining Hemmcock paths with those of adjoining parishes. Most paths are well signposted or waymarked.

The following OS maps will be of great value when following these walks.

Landranger 193 (1 1/4 ins. to 1 mile - 1:50,000).
Sheet ST 01/11 (1:25,000) The majority of Hemmcock paths are on this map. Sheet St 00/10 (1:25,000)

Refreshments can be obtained at the Catherine Wheel Inn during licensing hours. Brook House on The Square (open lunches and evenings Wed/Fri/Sat). Canned drinks etc. can be obtained at any of the three stores in the village.

Public toilets are situated next to the Parish Hall in Culmbridge Road. There is a public car Park in the centre of the village by the Baptist Church.